



Installation Guide: Champlain Stone Thin Veneer Products

Surface Preparation:

Champlain Stone's Thin Veneer Products may be installed over most any masonry surface or interior/exterior framed wall. All surfaces should be clean and dry and void of debris or loose material. All building materials, material sizes/gauges, and application techniques should be in compliance with both local building codes and manufacturer requirements. Installation in temperatures below 40°F is not recommended.



Champlain Stone recommends the use of type S mortar coupled with an acrylic bonding agent mixed per the manufacturer's instructions.



Installation of a weep system such as Masonry Technology's Sure-Cavity™ can create an effective percolation system for exterior moisture or interior condensation where needed and/or desired.

Framed Walls (*sheetrock, greenboard, or wood sheathing*), figure 1:

Install a vapor barrier (two-ply 15# felt or better) taking care to provide sufficient overlap both on the sides and top/bottom. Install galvanized diamond mesh expanded metal lath (2.5 lb. or higher recommended) with galvanized fasteners (or equivalent) 16" on center minimum, and every 6" vertically. Fasteners should penetrate underlying studs at least 1". Corner applications should overlap the lath installed on the wall flats by at least 4". Apply a 1/2" scratch coat and allow to cure thoroughly (24 hours).

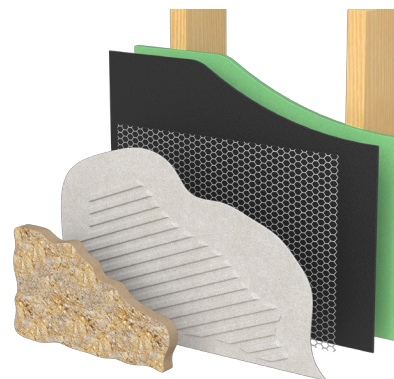


figure 1

Framed Walls (*concrete board*), figure 2:

Unless mandated by local codes, no specific surface preparation is required. If necessary, however, follow the instructions for sheetrock, greenboard and wood sheathing above EXCEPT for the vapor barrier, which should not be installed.



figure 2

Concord, NH
369 N. State St.
Concord, NH
P.603.225.4322

Amherst, NH
86 Route 101A
Amherst, NH
P.603.672.7827

Westbrook, ME
582 Bridgton Rd.
Westbrook, ME
P. 207.797.4500

Medway, MA
10 Main St.
Medway, MA
P.508.533.2882

Rowley, MA
125 Newburyport TPK
Rowley, MA
P.978.948.3363

Hanover, MA
742 Washington St.
Hanover, MA
P.781.829.0233

Newtown, CT
292 S. Main St.
Newtown, CT
P.203.270.6644



Installation Guide: Champlain Stone Thin Veneer Products

2

New Masonry (block or poured wall), figure 3a:

No specific surface preparation is required. For poured walls, be certain that all surfaces are void of any residual form release agents. If necessary, clean with muriatic acid, rinse, and allow to dry completely.

Existing Masonry (painted or sealed concrete, block or brick), figure 3b:

Sandblast the entire surface to remove paint and/or sealer, rinse, and allow to dry completely, OR install galvanized diamond mesh expanded metal lath (3.4 lb. recommended) with concrete screws or nails and apply a 1/2" scratch coat. Scratch coat should be allowed to cure thoroughly (24 hours).

Insulated Concrete Forms, figure 4:

Apply a vapor barrier followed by a weep system and expanded metal lath (as above) taking care to use fasteners of sufficient length to adequately penetrate the poured wall. Apply a 1/2" scratch coat and allow to cure thoroughly (24 hours).

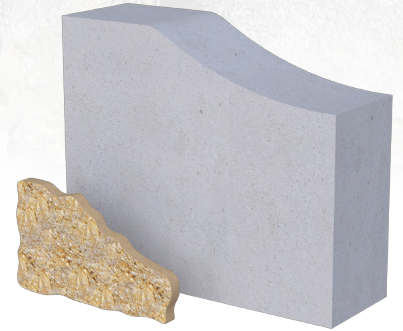


figure 3a

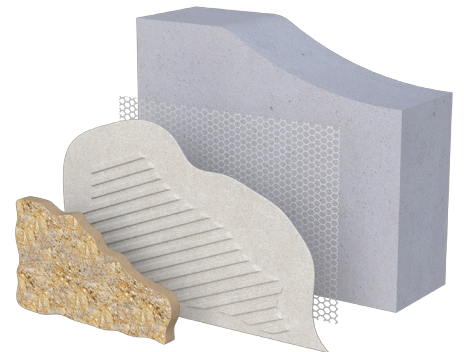


figure 3b

*Cavity weep system installed
directly over the vapor barrier*

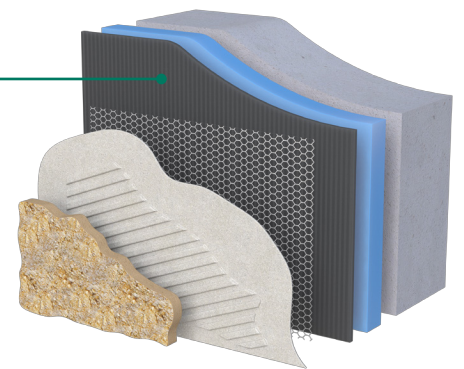


figure 4

Thank you once again for choosing Swenson Granite Works
as your supplier of fine manufactured granite products.

Concord, NH
369 N. State St.
Concord, NH
P.603.225.4322

Amherst, NH
86 Route 101A
Amherst, NH
P.603.672.7827

Westbrook, ME
582 Bridgton Rd.
Westbrook, ME
P. 207.797.4500

Medway, MA
10 Main St.
Medway, MA
P.508.533.2882

Rowley, MA
125 Newburyport TPK
Rowley, MA
P.978.948.3363

Hanover, MA
742 Washington St.
Hanover, MA
P.781.829.0233

Newtown, CT
292 S. Main St.
Newtown, CT
P.203.270.6644