



**DO IT  
ONCE.  
DO IT  
WITH  
STONE.**



Product  
Brochure



**YOUR  
DEDICATED  
GRANITE  
PEOPLE**

Whether you're a homeowner with a first-time project, or someone who does this every day, our experienced team is here to offer the guidance, knowledge and resources to get it done.

# STEP INTO TIMELESS STYLE

Nothing compares to the classic beauty and permanence of granite steps and treads. Harsh elements are no match for their durability; they won't degrade and will outperform wood, brick and concrete over the years. Elevate the look of any entrance, and greet your guests in style.

#### Granite steps

- + available in a variety of granites
- + durable, non-slip surface

#### Granite treads

- + naturally durable to withstand freeze-thaw cycles
- + provides maintenance-free protection for existing masonry and brick step foundations

**pictured here:** Woodbury Gray granite split face steps, Woodbury Gray granite lamp post.

**pictured here:** Woodbury Gray granite rock face entrance steps, with custom engraving



**pictured here:** 2" thick Woodbury Gray granite treads and platform



**pictured here:** Woodbury Gray granite split face entrance steps





# WELCOME BACK HOME

Make a memorable first impression with beautiful and functional granite and stone elements at the entrance of your home. Timeless and elegant, these stone applications convey charm, strength and character.

#### Granite posts

+ options for custom size, engraving, and hardware installation

#### Coping and caps

+ extensive supply of standard sizes in stock, plus custom fabrication for special sizes

#### Veneer

+ available in varying patterns and colors

**pictured here:** Caledonia granite custom pillar cap, South Bay Quartzite square and rectangular veneer, jumbo gray cobblestones

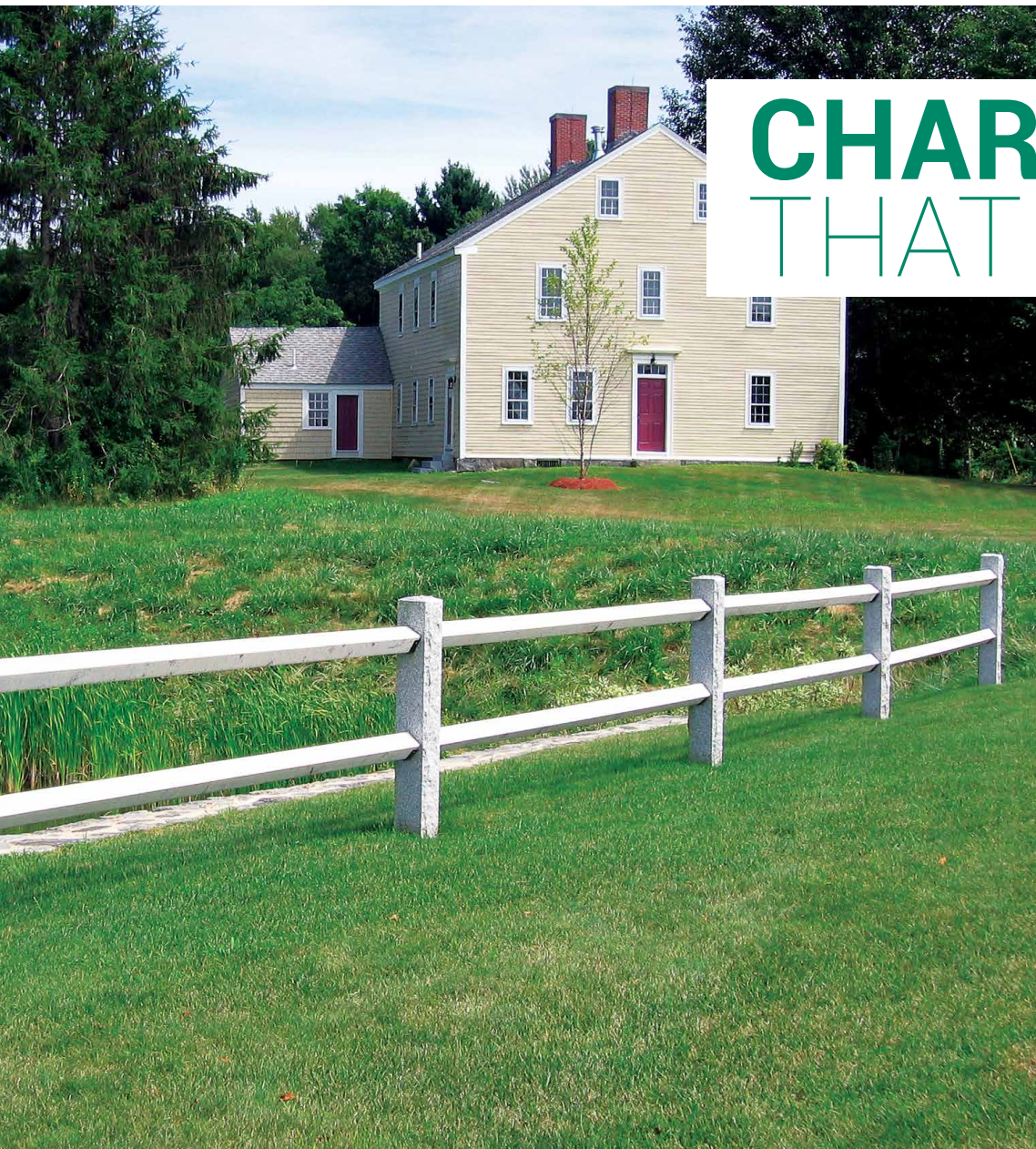
**pictured here:** cut to order Woodbury Gray granite pillar cap, radius wall cap, and plaque, South Bay Quartzite mosaic veneer



**pictured here:** Woodbury Gray granite lamp posts and lamp post caps



**pictured here:** engraved Woodbury Gray granite mailbox post



# CHARACTER THAT LASTS

Add flair and personality to your home or commercial space with granite and natural stone accents. Enhancing and protecting borders on your property will increase its value and add a distinctive finishing touch while reducing maintenance costs.

#### Granite posts

- + virtually maintenance free
- + attractive, value-adding

#### Garden and driveway edging

- + extensive supply of standard sizes in stock, plus custom fabrication for special sizes

#### Natural wallstone

- + 100% natural stone
- + varying patterns and colors

#### Granite cobblestones

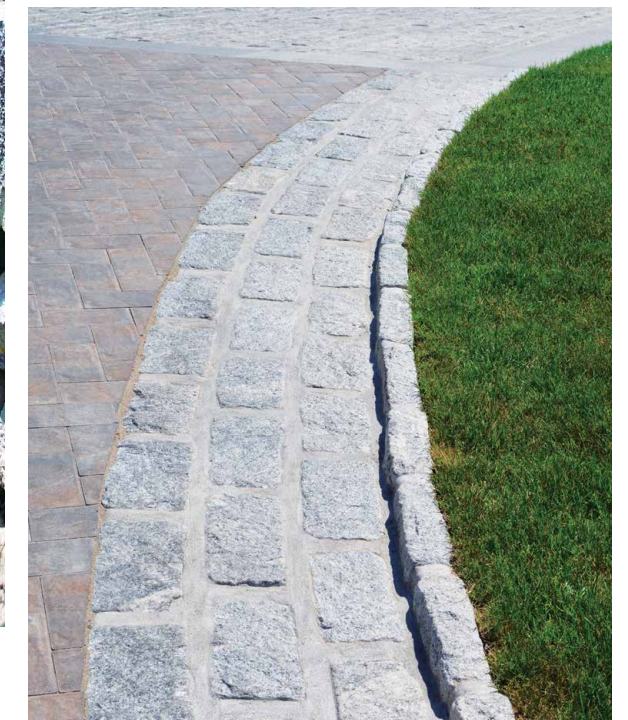
- + rustic appearance
- + several sizes, great for radius borders

**pictured here:** Woodbury Gray granite posts, thermal 2 sides/rock face 2 sides

**pictured here:** Weathered Mountain Stone



**pictured here:** Woodbury Gray granite garden edging, Blue Select Bluestone pavers, gray standard cobblestones



**pictured here:** jumbo gray cobblestones

# THE HEART OF YOUR HOME

Create a gathering point in your indoor living space or outdoor space with a stone fireplace or hearth. These features can add warmth and enduring beauty to your home or commercial property while creating a striking focal point and adding value.

## Veneer

- + available in traditional thickness and thin sawn applications

## Hearths and mantels

- + available in a wide range of materials

## Fire pits

- + virtually maintenance free
- + easy to assemble

**pictured here:** Back Meadow Fieldstone, thermal Bluestone hearth and mantel, Blue Select Bluestone pavers

**pictured here:**  
custom mix of  
South Bay Quartzite  
mosaic and square  
and rectangular veneer



**pictured here:** Woodbury Gray granite fire pit with cast iron ring and cooking grate



**pictured here:** Woodbury Gray granite hearth and mantel with rock face edges, Corinthian granite square and rectangular veneer



**pictured here:** custom irregular Woodbury Gray granite flagging, Weathered Mountain Stone

# RETREAT TO THE OUTDOORS

Create a space you'll enjoy for years to come. Our solutions for your yard, walkway or outdoor feature are available in a range of materials, colors and textures to complement your home or landscape.

## **Patios**

+ formal or rustic appearance

## **Flagstone**

+ pattern sizing as well as irregular shapes

## **Natural wallstone**

+ available in a variety of materials, colors and textures for outdoor walls

**pictured here:** Back Meadow Fieldstone, Blue Select Bluestone pattern pavers



**pictured here:** rock face Woodbury Gray granite coping, Boston Blend ledge thin veneer, Full Color natural cleft Bluestone pattern pavers



**pictured here:** Caledonia granite steps, treads, pavers and cap, Corinthian granite square and rectangular veneer



# POOLSIDE AFTERNOONS

Create a space that invites you to fire up the grill, pull out your favorite summer read, take a dip and relax with friends. With granite, you can also relax about the maintenance—because there won't be any.

#### Granite pavers

+ available in a variety of colors

#### Veneer

+ full bed and thin veneer in a variety of natural materials, colors, shapes and sizes

#### Coping and caps

+ variety of materials and colors  
+ maintenance free

**pictured here:** Woodbury Gray granite pattern pavers and pool coping

**pictured here:**  
Woodbury Gray granite steps, Bluestone wall cap, weathered quarry wallstone, irregular Bluestone flagging



**pictured here:** natural cleft Bluestone pattern pavers, Bluestone counter tops, Portsmouth granite ledge thin veneer



**pictured here:** Woodbury Gray granite spa and pool coping, treads, pattern pavers



## LOCATIONS

---

### **CONCORD, NH 03301**

603-225-4322  
fax: 603-228-2915

### **AMHERST, NH 03031**

603-672-7827  
fax: 603-673-3848

### **WESTBROOK, ME 04092**

207-797-4500  
fax: 207-797-2244

### **MEDWAY, MA 02053**

508-533-2882  
fax: 508-533-3441

### **ROWLEY, MA 01969**

978-948-3363  
fax: 978-948-3364

### **HANOVER, MA 02339**

781-829-0233  
fax: 781-829-0234

### **NEWTOWN, CT 06470**

203-270-6644  
fax: 203-270-6477

### **SHREWSBURY, MA 01545**

508-365-1340  
fax: 508-365-1341

### **SOUTH HADLEY, MA 01075**

413-322-8881  
fax: 413-322-0932

### **BUSINESS HOURS:**

#### **April – November:**

Mon – Fri 7:30 a.m. to 4:30 p.m. and  
Saturday 8:00 a.m. to noon

#### **December – March:**

Mon – Fri 8:00 a.m. to 4:00 p.m.



LEARN MORE ABOUT OUR LIFETIME WARRANTY  
AT [WWW.SWENSONGRANITE.COM](http://WWW.SWENSONGRANITE.COM)

